



**Executive Committee**

**Chairman**

John Lobo  
Eaton Corporation  
P. O. Box 4013  
Kalamazoo, MI 49003  
(269) 342-3342 (w)  
(269) 746-6342 (f)  
[gracalobo@asme.org](mailto:gracalobo@asme.org)

**Vice-Chairman**

Jerry Dahl  
Pfizer  
(269) 833-8232 (w)  
[dahlj1@asme.org](mailto:dahlj1@asme.org)

**Treasurer**

Peter P. Ried, Jr.  
Ried and Associates, LLC  
(269) 327-3097  
(269) 321-0904  
[riedp1@asme.org](mailto:riedp1@asme.org)

**Secretary**

Chad Orno  
GE - Betz  
(269) 998-6554 (w)  
[omoc@asme.org](mailto:omoc@asme.org)

**Chairperson Ex-Officio**

Robert L. Morgan  
Robert Morgan & Company, Inc.  
12450 East O Avenue  
Climax, MI 49034  
(269) 746-5777 (w)  
(269) 746-4850(f)  
[morganr1@asme.org](mailto:morganr1@asme.org)

**Members**

Dean Cross  
Lansing Brd. Water & Light  
(517)-694-9619 (w)  
[dac@lbwl.com](mailto:dac@lbwl.com)

Rachel Stuckey  
Byce & Associates  
(269)-381-6170 (w)  
[stuckeyr2@asme.org](mailto:stuckeyr2@asme.org)

Frank Lade  
Eaton Corp  
(269) 665-4287  
[franklade@aol.com](mailto:franklade@aol.com)

Tom Michelhaugh  
(269) 327 5145  
[michelhaught@asme.org](mailto:michelhaught@asme.org)

Koorosh Naghshineh  
WMU  
(269) 387-3333(w)  
(269) 387-3358(f)  
[koorosh.naghshineh@wmich.edu](mailto:koorosh.naghshineh@wmich.edu)

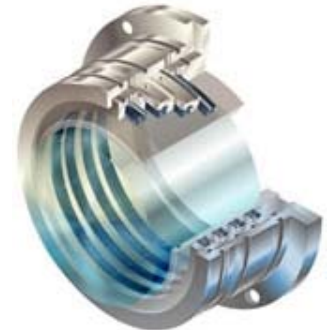
Dave VanDoren  
(269) 668-3397(w)  
(269) 668-5132(f)  
[vandoren2@asme.org](mailto:vandoren2@asme.org)

Le Roy Reiss  
CMS Energy  
(517) 788-2344(w)  
(517) 788-1115(f)  
[lreiss@cmsenergy.com](mailto:lreiss@cmsenergy.com)

**November 19 Meeting - Please Post on Bulletin Boards**



Our host will be Rob Phillips, Manager of Order Engineering for Flowserve - Flow Solutions Divisions. He has been with Flowserve for 11 years serving as a Research Engineer and Manager of Product Development. He is a member of the ASME B73 Committee and the Chairperson of the STLE Sealing Systems Technology Subcommittee. Mr. Phillips authored or co-authored seven published technical papers on seal technology. Flowserve is the world's premier provider of



industrial flow management services. The Company produces engineered pumps, precision mechanical seals, automated and manual quarter-turn valves, control valves and actuators, and provides a range of related flow management services, primarily for the process industries. The Kalamazoo facility is part of the Flow Solutions Division (FSD) and it houses the largest FSD technical and manufacturing centers. FSD is a world leading designer and manufacturer of mechanical seals and other engineered fluid sealing systems.

<p><b>Social hour and Dinner: 5:30 PM</b> Blue Dolphin Restaurant 502 S. Burdick St, Kalamazoo (269) 343-4993 (See map in this newsletter)</p>	<p><b>Tour: 7:00 PM</b> Flowserve Flow Solutions Division 2100 Factory Street, Kalamazoo (See map in this newsletter)</p>
--	---

**Location and Time**

**Dinner Choices:** (includes House Salad, Roll, Vegetable, Potato or Rice

- Spinach lasagna
- Broiled Orange Roughy w/ Lemon Butter
- Chicken Kebob
- Veal Parmesan

& non-alcoholic beverage)

**RSVP:** Deadline is 11/14/03

**Contacts:** Rachel Stuckey (269) 381-6170 or Email [stuckeyr2@asme.org](mailto:stuckeyr2@asme.org)

**Peter Ried (269) 327-3097 or Email [riedp1@asme.org](mailto:riedp1@asme.org)**

**Le Roy Reiss (517) 788-2344 or Email [lreiss@cmsenergy.com](mailto:lreiss@cmsenergy.com)**

**COST:** \$20.00--Members & Guests, Students -- \$10.00

Remember that the Section has to pay each reservation not fulfilled. Please cancel reservations if you find you cannot attend. You may reserve to attend the tour only without dinner. Please give meal choice as well as company affiliation with each reservation. Indicate an interest in carpooling with your reservation.



## Central Michigan Section

### RAMBLINGS FROM THE CHAIR:

The members of the Central MI Section Executive Committee are currently assessing future personal and professional commitments and will shortly begin the process of selecting and nominating members for the 2004/2005 Executive Committee offices. As always we continue to look for additional participation from our section's professional members. I encourage everyone to contact any of us Committee members and learn how to become involved in your local section and how that experience can be personally rewarding. I have been in the Committee for 8 years and continue to enjoy the challenges and rewards but most of all I enjoy the personal relationships that I've developed with other members.

Our next Executive Committee meeting is scheduled for 10 December 5:30PM at the Kraftbrau Brewery in downtown Kalamazoo. If you'd like to drop by and meet our Executive Committee members, please contact John Lobo, email [gracaloboj@asme.org](mailto:gracaloboj@asme.org). The pizza is on us.

If you are currently receiving the newsletter via email, please remember to update your personal information at [www.ASME.org](http://www.ASME.org) Members Only page if it changes, particularly, if your email address changes. If you currently received the newsletter in the mail, please consider changing to electronic delivery. Not only will you help the Section reduce operating costs, but also you'll receive timelier notifications of our events.

**HAVE A HAPPY AND SAFE THANKSGIVING!**

### **JANUARY 2004 MEETING**

Tour of Western Michigan University's College of Engineering (tentative).

