

**Executive Committee**

Chair

Tom Moriarty, PE  
(321) 773-3356  
tjmpe@alidade-mer.com

Vice-Chair

Hugh Bain  
ehbain@rockwellcollins.com

Treasurer & Student Section Advisor

John Van Gilder  
jvangild@harris.com

Secretary

Will Judd  
Judd, William E  
william.e.judd@boeing.ksc.nasa.gov

FIT Student Section Chair

Ian Trulson  
itrulson@fit.edu

Industry Relations & Professional

Development  
Scott Seigel  
seigels@emscoolheat.com

Membership Development

Leanna Konowicz

Minorities & Women

Stephanie Hopper

Newsletter Editor

~ Open Position ~

FSEC Representative

& WEB Masters  
Dave Chasar  
dchasar@fsec.ucf.edu

See Our Web Page for Contact

Information:

<http://sections.asme.org/canaveral/>

*Message from the Chair...*

Greetings Canaveral Section,

During January we had our Annual Awards Dinner at the Holiday Inn in Cocoa Beach. We had a very enjoyable evening with three of the award recipients, some of their family members and several other members of the Canaveral Section. We also had an interesting speaker, Chris Gilfriche, Sr. Program Engineer of the Space Alliance Technology Outreach Program. He made an excellent presentation on the SATOP outreach program that offers up to 40 hours of free engineering assistance to small businesses. Several examples of interesting problems and solutions were shown. A great program that matches small businesses with engineering talent, from many different disciplines, to solve problems that otherwise would represent lost revenues. You can check it out at [www.spacetechsolutions.com](http://www.spacetechsolutions.com).



**From left to right; Tom Moriarty, Canaveral Section Chair, Malcom "Mac" McClouth 50 Year Member, Lee Friedell 25 Year Member and Joe Maciejko 25 Year Member. Awardees who were not in attendance are Lewis Cook 50 Year Member, Daniel Rogers 44 Year Life Member, Robert Marando 25 Year Member and James Urick 25 Year Member.**



**Past Chair Dan Johnson receiving an ASME Achievement Award in recognition of diligent service and devotion to our Section.**

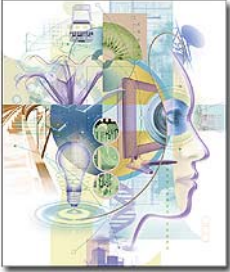
Our next event is coming up soon; the E-Week Banquet. This year it will be at Florida Tech. Details can be found on page 5 of this newsletter. In addition, we are looking into sponsoring professional development courses in the local area. If you have thoughts on subjects you would like to see presented please contact me or any of our Section Board members. We are also thinking about having courses next year during E-Week; perhaps multiple courses sponsored by some of our local major engineering firms. If you or your organization are interested in talking about this opportunity please Email me and let me know. It is already time to start thinking about next year's Section Board nominees. If you would like to volunteer please let me know by the end of February so you may be included in the election process.

Tom Moriarty, PE, CMRP  
(321) 773-3356 or  
tjmpe@alidade-mer.com

## Items of Interest

News items have just been posted on the ASME News Web site, exclusively at <http://www.asmenews.org/latebrk/latebrk.html>.

**A special Engineers Week event, "Introduce a Girl to Engineering Day," is scheduled for Thursday, Feb. 23.**



You can learn from those who have implemented successful programs in industry and academia by joining a free teleconference on Thursday, Jan.19, at 1 p.m. EST.

During the teleconference, engineers from ExxonMobil and the University of Texas-Austin will present best practices, and there will be time for Q&A as well as for participants to share information about their programs.

To register for the call, e-mail [eweek@nspe.org](mailto:eweek@nspe.org), and include your name and affiliation. Once you're registered, you'll receive the dial-in information.

## What's happening at Florida Tech

Tours, meetings, impromptu design competitions, and joint gatherings with the Canaveral Section are held throughout the regular Fall and Spring semesters. To get in contact with the Florida Tech Student Section please do not hesitate to contact Student Section Advisor JD Van Gilder at [jvangild@harris.com](mailto:jvangild@harris.com).

## Treasure Coast S.E.A.

Meetings are typically held on the third Friday of the month and meeting announcements will be sent via e-mail and the Vero Beach Press Journal prior to each meeting. If you would prefer to be reminded by any other method (phone, mail, etc.), please contact **Kelly Mather** at southmoon @bellsouth.net.

**The February Meeting will take place on Feb 17th at the Sebastian Council on Aging Conference Room. The topic is the propulsion plant for the MK 48 and MK 50 torpedos presented by Kelly Mather; who was Director of Engineering for these projects. Contact Kelly for details.**

## ASME Continuing Education

Short Courses: <http://www.asme.org/education/shortco/>


In-Company Programs: <http://www.asme.org/education/incomp/index.htm>

Distance Learning: <http://www.asme.org/education/disted/>

Technology Seminars: <http://www.asme.org/education/techsem/index.html>

Develop Continuing Education Programs: <http://www.asme.org/education/ceiopp/ceiopp.htm>

## Thanks to Our Sponsors!



**KEN BRACE**  
1335 Gateway Drive, Suite 2016  
Melbourne, Florida 32901  
Tel.: 321.984.8666 x201  
Fax: 321.724.8822  
Mobile: 321.536.2611  
kbrace@turnkeyeg.com  
www.turnkeyeg.com

**RAPID PROTOTYPING SERVICES**  
FDM (Fused Deposition Modeling)  
Material ABS (white, red, yellow, green, blue, gray, black)  
Build Size 23.5" \* 19.5" \* 23.5"Z  
Quick turn-24 hours in most cases




Tom Moriarty, PE, CMRP  
President

**Alidade MER, Inc.**

tjmpe@alidade-mer.com  
321-773-3356  
www.alidade-mer.com

**Reliability Solutions**

SETTING A COURSE FOR  
HIGH PERFORMANCE



**Jerry Forrester**  
Center Manager

2700 W. New Haven  
Melbourne, FL 32904-3706  
Telephone 321.725.7556  
Fax 321.725.7569  
mgr5900@fedexkinkos.com

Office and Print Services



**ProAero Technology**  
Engineering Consulting and Turn-Key CFD

**Matthew Tremmel**

(407) 563-1261 (Office)  
info@proaerotechnology.com  
www.proaerotechnology.com

ProAero Technology, LLC  
641 Nightingale Dr.  
Indialantic, FL 32903

**Your sponsorship notice can be seen by our members in the next issue of the Canaveral Flyer!**

## *Canaveral Section Sponsorship*

**Organization:**

**Phone:**

The Canaveral Section will supply a sponsorship notice in each newsletter containing a sponsor's business and contact information on standard business card size listing. The listing will run for duration of one year for a donation of \$200. The sponsorship funds received will be used to support section activities such as distinguished lecturers, professional development events and monthly meeting costs as well as student section scholarships, design competition sponsorships and activities. Provide the information above and attach a business card or the information you would like displayed in the listing and send it to ASME Canaveral Section P.O. Box 540171 Merrit Island, Fl 32954 or e-mail a soft copy of the file to J.D. Van Gilder at [vangilderj2@asme.org](mailto:vangilderj2@asme.org). A receipt will be provided for your tax records.

**Contact Person:**

**Date:**

**E-mail:**

## ASME Continuing Education Institute Offering Short Courses in Las Vegas, Houston and Orlando, Fla., During Next Two Months

ASME's Continuing Education Institute will offer more than 40 short courses during the months of February and March.

From Feb. 6–10 in Las Vegas, the institute will be holding the following courses: "Pump and Valve Selection (PD171)"; "API 579 Recommended Practice for Fitness-for-Service and Continued Operation of Equipment (PD395)"; "Section VIII — Advanced Design and Fabrication of Pressure Vessels (PD447)"; "Geometric Tolerancing: Stacks and Analysis (PD561)"; "Geometric Tolerancing: Applications with Stacks (PD562)"; "Chemical and Bioengineering Fundamentals for Technical and Scientific Professionals (CH024)"; "Flow of Solids in Bins, Hoppers, Chutes, and Feeders (CH032)"; "Pneumatic Conveying of Bulk Solids (CH033)"; and "PSM: Design and Evaluation of Process Safety Management Systems (CH501)."

Seminars to be offered in Houston, from March 13–17, include: "B31.3 Process Piping (PD014)"; "Failure, Repair and Life Extension of Systems and Components (PD077)"; "The Gas Turbine: Principles and Applications (PD115)"; "Using Risk and Reliability Engineering Principles for Improved Process Performance (PD335)"; "Centrifugal Pump Design and Applications (PD349)"; "Non-Destructive Examination (PD389)"; "The Layout of Piping Systems and Process Equipment (PD401)"; "Section VIII, Division 2: Pressure Vessels (PD448)"; "B31.3 Fabrication and Examination (PD457)"; "Component Reliability Analysis (PD494)"; "System Reliability Analysis (PD495)"; "Mechanical Insulation Design and Technology (PD568)"; "HAZOP Studies and Other PHA Techniques for Process Safety and Risk Management (CH157)"; "Chemical Reactor Design: A New Approach (CH522)"; "Bioseparations: Principles, Applications, and Scale-up (CH401)"; and "Understanding and Preventing Explosions (CH536)."

In Orlando, Fla., from March 27–31, CEI will give the following short courses: "B31.1 Power Piping Design and Fabrication (PD013)"; "Section XI: Inservice Inspection of Nuclear Power Plant Components (PD192)"; "Fracture Mechanics: Approach to Life Prediction (PD268)"; "Inspection, Repairs and Alterations of Pressure Vessels (PD441)"; "Section VIII, Division 1: Design and Fabrication of Pressure Vessels (PD442)"; "Section VIII — 5 day program, PD441 and PD442 combo (PD443)"; "The New Engineering Manager: Moving from Technical Professional to Manager (PD475)"; "Engineer as Coach (PD512)"; "Computerized Maintenance Management Systems (PD535)"; "Critical Aspects of Liquefied Natural Gas Terminals (PD572)"; "Fuel Cell Technology and Applications (PD573)"; "Renewable and Clean Energy Technology and Applications (PD574)"; "Distillation in Practice (CH004)"; and "Essentials of Chemical Engineering for Non-Engineers (CH710)."

To register, or for additional information including pricing and location of the courses, visit <http://catalog.asme.org/home.cfm?LanguageID=&Category=ED&ProductFormat=SHC>, or contact ASME Information Central, (800) 843-2763 or (973) 882-1167.

## Five Engineers Week Web seminars scheduled for this month

[Benedict Bahner, ASME News Online](#)

A number of activities, including the new "Connecting Educators to Engineering" program for middle school staff, will comprise this month's Engineers Week. In order for engineers and engineering students to better participate in these programs, EWeek organizers are holding five Web seminars to help you get the most out of your EWeek involvement.



**More info can be found at:**  
<http://www.asmenews.org/features/206eweek.html>

Engineers Week 2006, to be held from Feb. 19-25, will also include the Future City design competition for middle school students; the DiscoverE program for elementary and secondary school students, in which engineers visit elementary and secondary school classrooms or lead extracurricular activities; and Introduce a Girl to Engineering Day, which will be held on Thursday, Feb. 23.

## What is needed to participate in a Webinar?

At ASME, we are currently using **Webex** for webinars. Before joining a meeting, we highly recommend that you do a "[join meeting test](#)" with the computer that you will be using. The [minimum computer requirements](#) are:

**for Windows:** Windows 98, Me, NT, 2000, or XP

- Intel x86 (Pentium 400MHZ +) or compatible processor
- Microsoft Internet Explorer 5, 6, Mozilla 1.6 or later, or Netscape 4.7, 7.x
- JavaScript and cookies enabled in the browser
- 56K or faster Internet connection

A localized version of Windows is required to host or attend fully interactive meetings on Asian versions of Meeting Center (Japanese, Korean, Traditional Chinese, and Simplified Chinese).

**for Mac OS:** Mac OS 10.2.x or later

- Internet Explorer 5.2 or Safari 1.1 or later
- JavaScript and cookies enabled for the browser

### Florida Tech is hosting the CCTS Engineers' Week!

Banquet at the Denius Student Center, Hartley Room, on Friday, Feb. 24.

It starts at 7 p.m. with networking (with beer, wine and soft drinks) and an Italian buffet dinner at 7:30 p.m.

Florida Tech Dean of Engineering, Dr. Thomas Waite, will make the introductions.

ASME Canaveral Section will be presenting the 2006 J. Tal Webb Award

Tables for groups, which seat 8, are \$225 and individual tickets are \$30.

The audience will include members of CCTS and local companies and Florida Tech alumni, faculty, staff.

## Spring 2006 Events, January 2006-June 2006

<b>Mark your Calendars - 2006 Canaveral Section Events</b>					
Date	Event	Location	RSVP Date	Contact	Contact Info
Jan 24	Annual ASME Canaveral Section Awards Dinner	Holiday Inn Oceanside Cocoa Beach, FL	Jan 15, 2006	Dan Johnson	johnsond2@asme.org
Feb	E-Week Banquet	Florida Tech Hartley Room Denius Student Center	Feb 24, 2006	<a href="#">Tom Moriarty</a>	<a href="mailto:tjmpe@alidade-mer.com">tjmpe@alidade-mer.com</a>
Mar	Joint Meeting w/ Student Section Dinner and Sr. Design Project Presentations	FIT Campus	TBD	JD Van Gilder	jvangild@harris.com
Apr	Manufacturing Plant Tour	TBD		<a href="#">Tom Moriarty</a>	<a href="mailto:tjmpe@alidade-mer.com">tjmpe@alidade-mer.com</a>
May	FIT Lab Tour	TBD		<a href="#">Tom Moriarty</a>	<a href="mailto:tjmpe@alidade-mer.com">tjmpe@alidade-mer.com</a>
Jun	End of the Program Year			<a href="#">Tom Moriarty</a>	<a href="mailto:tjmpe@alidade-mer.com">tjmpe@alidade-mer.com</a>



# **AMERICAN SOCIETY OF MECHANICAL ENGINEERS**

**CCTS  
1980 N. Atlantic Ave.  
Suite 401  
Cocoa Beach, FL 32931**

