

## Message from the Chair

**Amos Turnipseed, PE**  
**Project Engineer**  
**Baker Refrigeration Systems, Inc.**  
**Russellville, AR**

Sadly, this will be my last Message from the Chair. Our Chair-Elect, Danny Hughes, will be taking the helm in July. It's been an enjoyable experience for me to lead such a fine group of folks. I'd like to give special thanks to the members of our Board who have helped me keep things running smoothly this year. It takes a good bit of effort to keep the Section going, and volunteers always seem to be in short supply. If you are interested in becoming more active this year, I would encourage you to lend your support by taking on one of the several key committee chair positions available. Feel free to contact Danny or me for more information.

As usual, we'll be taking a break in our activities for a couple of months this summer, but we'll soon be planning our activities for the fall. If you have any suggestions, please let us know.

---

## INSIDE THIS ISSUE

---

- 1 **Local Section News**
- 2 **ASME Think Tank Summit**
- 2 **GMET Program**
- 3 **ASME Professional Practice Curriculum**
- 3 **ASME/ABET Program Evaluators**
- 4 **2007 IMECE**
- 5 **Local Section News – Solar Splash 2007**

## Local Section News

### Gates Rubber Plant Tour

On May 31<sup>st</sup>, Jerry Bradford, Engineering Manager for Gates Rubber Co. in Siloam Springs, AR, conducted a tour of their facility for our members. Mr. Bradford provided an interesting insight into the processes involved in the production of Gates' impressive line of power transmission belts.

### General Meeting

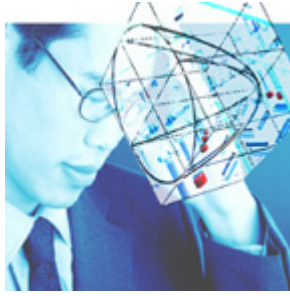
A general meeting was held at Italian Gardens Restaurant on June 19<sup>th</sup>. After a brief introduction from the Chair and discussion of current events, we enjoyed interesting conversation over dinner. Afterward, Adrienne Jaspers, our Treasurer, made a presentation on "The Value of Membership" which outlined the many benefits of maintaining a membership with the ASME. Danny Hughes, our Vice Chair, then gave a short presentation on "The Future of Nuclear Power" which shed light on what we can expect to see as the world attempts to make power production keep pace with the ever-increasing demand.

### Student Section Advisor Honored

Brad Edgar, PhD was recognized at our July General Meeting for his service as Advisor for the ASME Student Section at Arkansas State University in Jonesboro.

Dr. Edgar is Director of Mechanical Engineering as well as an Assistant Professor of Mechanical Engineering at ASU.

## ASME Think Tank Summit to Address Today's Engineering Issues



Held in conjunction with the 2007 ASME Summer Annual Meeting in Toronto, Canada, the Society will conduct its first Think Tank Summit, June 10-11. The Summit, held at the Fairmont Royal York Hotel, will address three issues critical to today's engineers. Panel sessions include "Fruits and Pitfalls of Product Lifecycle Management," which takes a look at the emerging importance of PLM and its impact on product development processes across the value chain to deliver the most business value. "Teaching Women Engineering, A Double Standard?" will look at the pros and cons of a recent report by the National Academies that suggests that colleges and universities are outmoded in their thinking of women in engineering, and "Human Factor Engineering, Designing for the User" will ask the question: Are all products designed with the consumer (human factor) in mind? Designers, critics and the audience will probe into this topic and also take a look at sample products that include the good, the bad, and the ugly. The ASME Think Tank Summit brings together leaders in industry, government, academia and ASME in three 90-minute town-hall-style discussions.

For more details and to registration visit the Web site at <http://www.asmeconferences.org/SAM07/ThinkTank.cfm> or email to [klaskyp@asme.org](mailto:klaskyp@asme.org)

### GMET: A Boon for Global Business Professionals

Engineers, as well as people in many other professions, don't receive adequate training in business and global operations when they are in school. Researches show that there is an unmet demand for knowledge and skills in global business from companies with global operations.

Globalization affects everyone. Production lines are shipped overseas. Many business activities are located off-shored or outsourced. Products are marketed to hundred of countries and regions. Many engineers have to interact, collaborate, coordinate, or lead teams or work forces thousands of miles away, across cultures, and many time zones. Luckily, Globalization also renders engineers unprecedented opportunities. Now you can help your company break into many new markets, but you need the necessary knowledge and skills to fulfill it.

To help engineers and companies cope with these issues, ASME launched a new global training program – [Global Management of Engineering and Technology](http://www.asme.org/Education/Courses/GMET/Global_Management_Technology.cfm) (GMET), which covers the knowledge and skills you need to take products and services from design or drawing boards to the placement of goods on the shelves of department stores and super markets worldwide. Each GMET course has eight online modules with lecture notes, case studies, reading materials, online quizzes, a course library, and a class forum where trainees can interact with classmates and the trainer, followed by three-day live in-class training by the chief instructor. It suits a wide spectrum of learning habits, styles, and career paths. ASME has formed GMET global training partners in China, India, Malaysia, The Middle East, and North America. You can access the course materials through the website of ASME and its partners at anytime, and from anywhere throughout the world. For more information, please visit:

[http://www.asme.org/Education/Courses/GMET/Global\\_Management\\_Technology.cfm](http://www.asme.org/Education/Courses/GMET/Global_Management_Technology.cfm)

## Universities Need Your Valuable Perspective!

Applications are currently being accepted for ASME/ABET Program Evaluators.

Program Evaluators contribute to the continuous improvement of Mechanical Engineering, Mechanical Engineering Technology, or related degree programs by evaluating them against a set of criteria related to faculty, facilities, curriculum, and other key program areas. In doing so, you will be helping to assure the quality of undergraduate degree programs and the students graduating from those programs. Serving on an assessment team for a degree program is very professionally and personally rewarding and a great way of supporting the future advancement of the engineering profession.

Applicants should:

- Demonstrate an interest in undergraduate education.
- Demonstrate desired competencies outlined in ABET's Competency Model
- At least one degree in mechanical engineering, mechanical engineering technology, or a closely related discipline.
- 10+ years of work experience. Management experience a plus.
- Graduate degree preferred
- ASME member or willingness to become a member prior to applying to serve as an evaluator

Applications are due by Oct. 15. To complete an application and for more information, please visit [http://www.asme.org/Education/College/ABET/Become\\_Evaluator.cfm](http://www.asme.org/Education/College/ABET/Become_Evaluator.cfm)

ASME is committed to increasing the range of valuable perspectives which comes from having a diverse cadre of program evaluators. As such, we especially encourage minorities, women, and engineers working in industry to apply. Contact Amy Bentow, manager, Education, at [bentowa@asme.org](mailto:bentowa@asme.org) or 212-591-7880 with additional questions.

## FREE Interactive Volumes on ASME e-library!

The library includes general technical volumes, such as Mark's Standard Handbook for Mechanical Engineers and books on specific topics.

To view the complete list of books, and to sign up for this free member benefit, visit <http://www.asme.org/Membership/Benefits/Professional/eLibrary.cfm>



## Advancing Your Career

The ASME Professional Practice Curriculum (PPC) is an online resource designed to help you advance in the engineering profession by providing guidance and resources on subjects that complement an engineers technical skills.

The PPC consists of 42 modules on topics ranging from product development and writing cost proposals to team building and negotiation. The PPC also provides information on alternative engineering career paths such as patent law, marketing and sales, and entrepreneurship.

To get started, please visit [www.professionalpractice.asme.org](http://www.professionalpractice.asme.org).

## Early Career Fair in Toronto, Canada

The next Early Career Forum and Fair will be held on June 10 in conjunction with the 2007 ASME Summer Annual Meeting and Think Tank Summit, at the Fairmont Royal York Hotel in Toronto, Canada.

Segments include *Transitioning from Technical to Management*, which will feature three speakers who have made such a transition; *Ethically Speaking*, which will address some of the ethical questions facing engineers in today's workplace; and an open Career Fair, which will place hiring engineering firms with attendees looking for opportunities.

For more information on the Forums and Fairs, and important updates for US Citizens traveling to Canada, visit:

[http://www.asme.org/Communities/EarlyCareer/Forum/Upcoming\\_Events.cfm](http://www.asme.org/Communities/EarlyCareer/Forum/Upcoming_Events.cfm)

For information on the ASME Summer Annual Meeting, visit:

<http://www.asmeconferences.org/sam07/>

## **2007 International Mechanical Engineering Congress and Exposition (IMECE)**

Plans are well underway for another great ASME Congress on Nov. 11-15, 2007 in Seattle, WA. More than 3000 abstracts have been received and are currently being reviewed for quality and appropriateness for the Congress. The abstracts and papers that pass the review process will be programmed for presentations, along with several panel sessions and poster sessions. We expect to have at least 460 technical sessions programmed from Monday through Thursday. These presentations will be grouped into a new multidisciplinary Track structure. The Track topics are currently being developed. Some of the expected Tracks are:

- Micro- and Nano-Systems
- Mechanics of Solids and Structures
- Biomedical Engineering and Biotechnology
- Energy Systems
- Transportation Systems
- Mechanical Systems and Control
- Heat Transfer, Fluid Flows and Thermal Systems
- Design and Manufacturing
- Sustainable Products and Processes
- Safety Engineering and Reliability
- Processing and Application of Novel Materials
- Software for Engineering Applications
- Engineering Education and Professional Development

The new Track system that replaces the Division-based programming was developed through unprecedented collaboration between Divisions and other ASME Units. Each Track consists of several technical Symposia on topics related to the Track theme, and each Symposium includes several topical Sessions. It is hoped that the new structure will make it easier to manage potential scheduling conflicts and will make the final program easier to maneuver. This is truly a departure from past practice, and I want to take this opportunity to thank all the Division Program Representatives and Track Chairs that helped develop the new system.

There are other changes to the overall program as well. The Honors Assembly, which has been a very important part of Congress, will be moved to Monday night. The Keynote presentation will take place on Sunday evening followed by a Welcome Reception for all attendees. Another important improvement is the daily Authors' Breakfast from Monday through Thursday. This event will provide an opportunity for the Session Chairs to meet the presenters in their sessions. Also, coffee and refreshments will be provided during breaks for all attendees.

In order to reduce the number of parallel activities and reduce scheduling conflicts, most of the governance and business meetings of ASME will be moved to Friday through Sunday. However, all Division level committee meetings and functions will be scheduled during the Monday-Thursday time frame. The popular Student Design Contest and Early Career Forum will be held on Sunday.

Last year in Chicago we implemented a new registration policy to reduce the potential no-shows that had plagued the Conference in recent years. All authors and presenters were required to register in advance. Since this policy was effective and substantially reduced the number of no-shows in Chicago, it will be followed in Seattle as well. Please check the ASME Congress web site ([www.asme.org/congress](http://www.asme.org/congress)) for further information and see how the technical program is taking shape.

We look forward to seeing everyone in Seattle for another successful Congress, the ASME's premier event.

Said Jahanmir  
2007 Congress Chair

## Local Section News

### Solar Splash 2007 – Unqualified Success

By Bill Springer, PhD

For the second year Solar Splash was held on Lake Fayetteville with teams from across the country and around the world. For three years the team from Istanbul Technical University had attempted to get to Solar Splash and it turned out the third year was the charm. Not only did they have to ship their boat over 7,000 miles, but they had to have it finished by April 28<sup>th</sup> which was the date the shipping container holding their boat and needed equipment was picked up for shipment. So when they arrived in Fayetteville, it had been approximately 6 weeks since the last time they had put their boat in the water. Needless to say, they were very interested in getting some lake time. The success of their efforts was apparent to everyone as they finished in third place as a rookie team, plus winning several other trophies for the work.

For the fourth straight year the University of Arkansas and Cedarville University from Ohio fought it out for first and second place. And for the third time in that same four year period, Cedarville finished in first place with the UA team in second. While that was disappointing to yours truly and the UA students on the team, the UA was the first team since 1997 to win the championship heats in both the sprint and endurance races. The manner in which the event is scored allocates the maximum number of points available in each of the major events based on the best overall performance in that event, but awards the first place trophy to the winner of the championship heat in each event. That procedure gave the UA team both the maximum point score in the sprint event (two fastest 300 meter times under 25 seconds with 30 mph top speed) plus the first place trophy (won the final heat by over two boat lengths), but slightly less than the maximum number of points in the endurance event while awarding us the first place trophy for logging the longest distance traveled in the championship heat. We also received awards for the “Hottest Looking Boat”, “Workmanship”, and “Outstanding Solar System Design.” So the team was pleased with the overall result even though finishing first again this year would have been icing on the cake.

Our goal this year was to enter both a mono hull and a catamaran design, but we fell just short of achieving that goal. We were successful in completing the mono hull design which was a slight modification of last year’s overall championship boat, and it out performed last year’s boat in almost every event. The catamaran design suffered several delays during construction which eventually forced to halt construction so that we could focus all our attention on completing our mono hull entry. However, the catamaran design should be up and running by the end of September which will give us plenty of testing and evaluation time before next year’s race. Our focus for this boat is to optimize its performance for the endurance event with the goal of winning the event by the largest possible margin and then hope that it will perform well enough in the other events to keep it in the mix for overall champion. We will also be working to improve the overall performance of our mono hull entry with a major goal to break the 300 meter speed record for Solar Splash which will require us to drop our fastest elapsed time of this year by a little over 1 second (no small task I assure you).

Our thanks go out to all the folks that helped us make Solar Splash 2007 a big success. These volunteers worked long and hard to make sure that everything went off on schedule and without a hitch. Since Solar Splash will be in Fayetteville through the summer of 2011, I would like to encourage everyone to block out the middle of June 2008 right now and plan on coming up to the race or even volunteering if you can (we need all the help we can get each year). Oh yea, Wooooooo Pig Soooooooie, Razorbacks!!!!

### **2006-2007 ASME Arkansas Section Officers**

Chair:	Amos Turnipseed, PE	Baker Refrigeration Systems, Inc.	<a href="mailto:aturnip@baker-ref.com">aturnip@baker-ref.com</a>
Vice Chair:	Danny Hughes, PE	Entergy	<a href="mailto:dhughes@entergy.com">dhughes@entergy.com</a>
Secretary:	Ken French, Jr. PE	John Brown University	<a href="mailto:kwfjr@jbu.edu">kwfjr@jbu.edu</a>
Treasurer:	Adrienne Jaspers	Kawneer North America	<a href="mailto:adrienne.jaspers@kawneer.com">adrienne.jaspers@kawneer.com</a>

### **ASME Arkansas Student Section Faculty Leaders**

Arkansas State University	Professor Brad Edgar	<a href="mailto:bedgar@astate.edu">bedgar@astate.edu</a>
Arkansas Tech University	Professor Robert Frasier	<a href="mailto:Robert.frasier@atu.edu">Robert.frasier@atu.edu</a>
John Brown University	Professor Young-Gurl Kim	<a href="mailto:YGkim@jbu.edu">YGkim@jbu.edu</a>
University of Arkansas - Fayetteville	Professor Rick Couvillon	<a href="mailto:rjc@uark.edu">rjc@uark.edu</a>
University of Arkansas - Fort Smith	Professor Michael Reynolds	<a href="mailto:mreynold@uafortsmith.edu">mreynold@uafortsmith.edu</a>
University of Arkansas - Little Rock	Professor Srikanth Pidugu	<a href="mailto:sbpidugu@ualr.edu">sbpidugu@ualr.edu</a>