



American Society of Mechanical Engineers - Fox Valley Section

**Tour of CNH Burr Ridge Facility
Wednesday, May 14, 2008**

**Presenter: Lee Fletcher
Manager of Ag (Agriculture Equipment) Tractor Vehicle Engineering
6900 Veterans Boulevard
Burr Ridge, IL**

CNH or Case New Holland is a world leader in the manufacture of agricultural and construction equipment. Our May 14th meeting will start with a light dinner in the CNH cafeteria. After the dinner there will be a tour of the CNH manufacturing facility and their Virtual Reality Labs.

Virtual Reality Center (VRC) Applications at CNH

VRC adds another dimension to visualizing design concepts and CAE results without expensive physical prototypes. Interactive review of design changes to the most widely used application, facilitating interference analysis of various functional assemblies, and quick navigation to part of interest and quick switch from design to VRC. The presentation will provide examples of the VRC applications using peripherals that interface humans with hardware and software.

LOCATION AND DIRECTIONS:

To reach Burr ridge when traveling on I-294, exit on I-55 Southbound, Keep right and exit on County line road heading north. Turn Left at the first stop light (Veterans Boulevard) and go straight after the stop sign. Park in the south parking lot and enter at the security desk.
See map below.

SCHEDULE: 5:30 – 6:00 pm Registration, 6:00 - 6:30 pm Dinner, 6:30pm Presentation and Tour

DINNER: Light Dinner consisting of sandwiches, salads and soft drinks.

COST: \$10.00 payable at sign-in, **by check or cash only.**

RESERVATIONS:

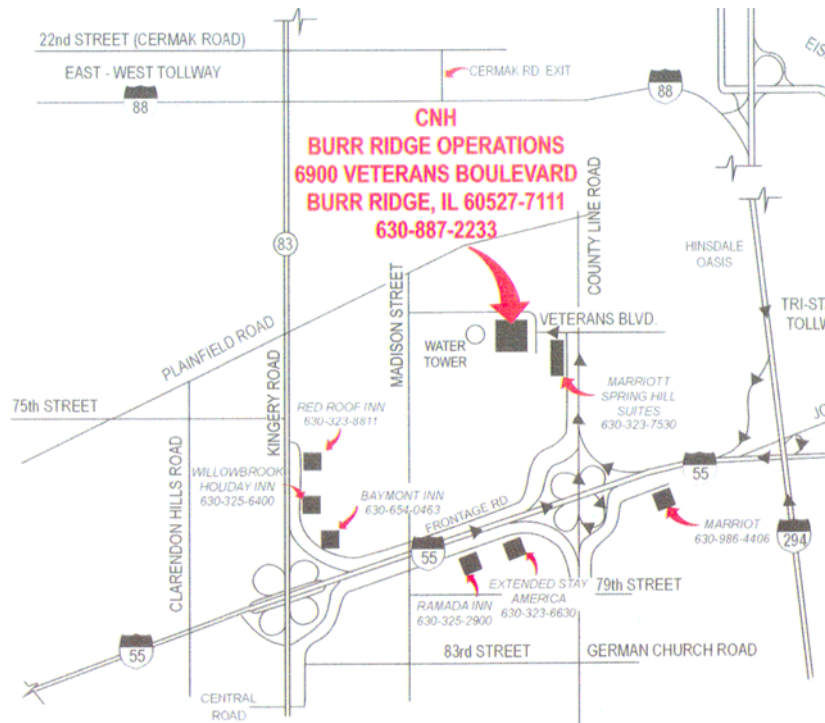
Send e-mail to mmurray@packereng.com with the subject “**ASME Meeting**” and include your name, phone number, ASME membership number, company name, and address. If you do not have e-mail access, call (630) 505-5722, and leave a message stating this is a reservation for the ASME Meeting on May 14th and include the above information. If bringing a guest, provide the full name of the guest along with the other information required above.

DEADLINE:

Noon Friday, May 9, 2008. Please cancel if your plans change. Reservations not cancelled by the deadline may be invoiced cost of dinner

Theodore “Ted” Luga

We were recently advised that one of our members Theodore “Ted” Luga, Schaumburg, had passed away, and the family asked if we would pass it along to you as many of you knew him.



Upcoming meetings

I-35 Bridge Collapse over the Mississippi River – Thursday, May 22, 2008.

This May 22 event will be a joint meeting of ASME Fox Valley, ASME Skokie Valley, American Society of Civil Engineers and Illinois Structural Engineers Association. The presentation will be given by Dr. Su Hao, who will report on a study performed shortly after the collapse of the I-35W Bridge over the Mississippi River last August 1st. It contains three parts: (1) two and three dimensional computation-based structural and fracture analysis; (2) identification of the possible sources and causes for the collapse; and, (3) the proposal of a “living-monitoring system” for the safe operation of a structure with defect. Registration information can be found on the Skokie Valley website which includes more detail on the presentation, menu, cost, and location of the meeting. <http://sections.asme.org/skokievalley> Do not contact Maureen Murray to register for this meeting

There are several openings for directors or other positions in the Fox Valley Section, please contact us if you have an interest in helping keeping the section active.