

2009 - 2010 OFFICERS

CHAIR

Mike Carlson, Zachry Engineering
Phone: (402) 548-4807
Email: carlsonm@zhi.com

VICE CHAIR / NEWSLETTER

David Ortiz, OPPD
Phone: (402) 533-7283
Email: dtortiz@oppd.com

**SECRETARY / PROF.
DEVELOPMENT CHAIR**

Robert L. Bowman, MUD
Phone: (402) 504-7923
Email: Bob_Bowman@mudnebr.com

TREASURER / MEMBER INTERESTS

Dave Stransky, HDR, Inc
Phone: (402) 399-1258
Email: david.stransky@hdrinc.com

PROGRAMS CHAIR

Jay Fluehr, OPPD
Phone: (402) 533-7282
Email: jfluehr@oppd.com

TECHNICAL ACTIVITIES CHAIR

Matt Dick, Rail Sciences
Phone: (402) 827-5712
Email: matt@railsciences.com

HONORS & AWARDS CHAIR

Bill Madden, PURAC
Phone: (402) 533-1757
Email: w.madden@purac.com

**MEMBERSHIP DEVELOPMENT /
COLLEGE RELATIONS CHAIR**

Hans Iwand, Rail Sciences
Phone: (402) 827-9328
Email: hans@railsciences.com

**HISTORY & HERITAGE /
GOVERNMENT RELATIONS CHAIR**

Bill Redinger, OPPD
Phone: (402) 636-2482
Email: wredinger@oppd.com

WEBMASTER

Greg Krieser, OPPD
Phone: (402) 636-2603
Email: krieserg@asme.org

FACULTY ADVISORS

UNIV. OF NEBRASKA - LINCOLN

Wieslaw Szydlowski
Phone: (402) 472-5969
Email: merdwms@engunx.unl.edu

SOUTH DAKOTA STATE UNIV.

Fereidoon Delfanian, P.E.
Phone: (605) 688-4300
Email: fereidoon.delfanian@sdstate.edu

**S. DAKOTA SCHOOL OF MINES
& TECHNOLOGY**

Jason Ash
Phone: (605) 355-3736
Email: jason.ash@sdsmt.edu

DORDT COLLEGE

Nolan Van Gaalen
Phone: (712) 722-6289/1198
Email: nolan@dordt.edu

September, 2009 Newsletter

Message from the Chair

Welcome and an early thank you to all members and students of the Nebraska section of ASME. The 2008-2009 business year was a GREAT success for ASME, setting record attendance and participation in many events. We hope to continue that success this year, and our planning and organizing many great events.

Currently ongoing, the PE refresher course is underway, being hosted at HDR. Many thanks to HDR for supporting this cause.

The Nebraska Section would like to thank our outgoing chair, Gary Ruhl, for his years of dedication to this section. Please share your thanks with him the next time you see him.

We would also like to welcome our newest member to the executive council of the Nebraska Section, Mr. David Ortiz. David works for OPPD, and has taken on the Vice Chair position for our section.

Without these volunteers who sit on the executive committee and assist with our day to day operations, we would not have the success we have had for many years. I will already start the recruiting now for 2010, for new members of our executive council. Please, if you have an interest, or know an ASME member who would be of great help, please let me know. It is truly a rewarding experience, and a great service to the engineering community.

Our next event is just around the corner, a tour of the UNL Midwest Roadside Safety Facility in Lincoln. Event details are below in the newsletter.

Mike Carlson
ASME, Nebraska Section Chair.

2009-2010 ASME Nebraska Section planned program is as follows:

September: PE Refresher, UNL Roadside Safety Facility Tour

October:

November: PD Course

December: Christmas Program at Mahoney State Park

January:

February: E-Week

March: PD Course

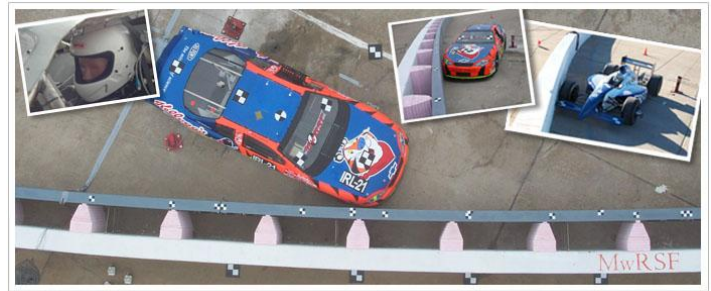
April: Industrial Tour

May: NSPE Golf Outing

INSIDE THIS ISSUE



- 1 **Local Section News**
- 2 **September ASME Meeting**
- 3 **The Need for Balance**
- 4 **Volunteer Opportunity Bulletin Board**
- 5 **E-Mentors and Career Guidance**



MwRSF
Midwest Roadside
Safety Facility

September ASME Meeting: Tour and Presentation
at UNL Midwest Roadside Safety Facility

When: Tuesday, September 29, 5:00 PM

Where: 4800 N.W. 35th Street in Lincoln (West side
of the Lincoln airport)

The Midwest Roadside Safety Facility (MwRSF), part of the University of Nebraska-Lincoln, is a research organization with a main focus of researching all aspects of highway design and safety. MwRSF conducts safety performance evaluations of various roadside appurtenances, developing new and innovative design concepts and technologies in the area of highway safety.

You have probably seen some of their work in action, either on television or in person. The Steel and Foam Energy Reduction (SAFER) barrier was developed by engineers at MwRSF in 1998. It was first installed at the [Indianapolis Motor Speedway](#) in 2002, in time for the [Indianapolis 500](#) and first "tested" by [Robby McGehee](#) in a crash during the first day of practice. Every oval facility that hosts an [IRL IndyCar Series](#) or [NASCAR Sprint Cup Series](#) event now includes the SAFER barrier.

Dinner to follow at Lincoln Spaghetti Works, 228 North 12th St.
Pasta with your choice of sauce * Salad * Italian Loaf * Coffee, tea or soda
\$12.00 (half price for students)

Contact Jay Fluehr by 9/26/09 for reservation
FluehrEngineering@gmail.com, 402-334-0509

ASME PRESIDENT AMOS HOLT ON THE NEED FOR BALANCE



Global environmental pressures and competition for scarce resources challenge industry and the engineering profession far more than most issues.

Nowadays, new technologies and techniques that promote sustainability in future markets are central to building communities, advancing knowledge and setting standards.

As an impartial convener of innovative technical communities, ASME's capacity for collaboration and partnerships helps us to move forward on sustainability initiatives that have broad impact across many disciplines, many borders, and many interests. Ultimately, ASME can help address some of the barriers, such as improving the public's understanding of engineering, by ensuring accuracy and transparency in what engineers do to improve quality of life.

ASME calls for a balanced portfolio of energy resources and the Society encourages a culture of innovation needed to produce the kind of breakthrough thinking that delivers to the world clean, accessible, and affordable energy, while meeting increased demands for electric power generation, conservation and efficiency.

--- Read more in ASME News' "Letter from the President" Aug. 5, 2009.

http://www.asmenews.org/0809_1stories/president.html

PLAN TO ATTEND THE 2009 ASME CONGRESS



The ASME International Mechanical Engineering Congress and Exposition, including 20 discussion tracks on topics ranging from energy to nanotechnology, will be held Nov. 13-19, at the Walt Disney World Swan and Dolphin in Lake Buena Vista, Fla.

The Congress, the Society's largest annual conference, will bring together engineers, scientists and other professionals from around the world to discuss new research and applications that are shaping the future of engineering. The conference will feature nearly 350 technical sessions covering advancements in aerospace technology, manufacturing, micro devices, transportation, and biotechnology to name a few. Get unique insights into engineering's cutting-edge research and development and how it will determine the evolution of technology worldwide. Discover trend setting innovations and tools being showcased by industry leading companies, and build your professional network, expand your knowledge, and advance your career through various forums, workshops, industry tours, and a Career Expo.


For event information, visit

<http://www.asmeconferences.org/Congress09/>.

GTUS COMES TO HOUSTON

The ASME International Gas Turbine Institute (IGTI) has announced the Gas Turbine Users Symposium 2009 for technical professionals interested in the latest practical information on gas turbine operations, maintenance, and design. The symposium will be held Sept. 14-17, at the George R. Brown Convention Center in Houston, Texas. The Gas Turbine Users Symposium (GTUS) will encompass four technical tracks covering turbine design, operations and maintenance, technology advancements, and gas turbine environmental issues.

The program will include panel discussions, tutorials, and case studies. In addition, selected applications-oriented technical papers from the program of the 2009 ASME Turbo Expo will be presented. For registration information and detailed descriptions of the technical tracks, log onto www.asmeconferences.org/gtus09.



GTUS GAS TURBINE USERS SYMPOSIUM
Presented by the International Gas Turbine Institute

ASME Gas Turbine Users Symposium 2009
Sept. 14-17, 2009 • Houston, Texas USA
George R. Brown Convention Center
Co-located with the 38th Turbomachinery Symposium

Are YOU the New Face of Mechanical Engineering?

ASME wants you to tell us your story! The New Faces of Engineering program strives to promote the accomplishments of early career engineers by highlighting their engineering contributions and the resulting impact on society.

How Do You Get Recognized? You've got to be 30 years of age or younger as of Dec. 31, 2009; have a degree in engineering from an ABET accredited U.S. college or university, or from an equivalent international educational institution; and be a current member of ASME.

Nominate yourself, or a worthy colleague, today:
<http://www.eweek.org/site/engineers/newfaces2010/nomination.shtml>

This year we are again asking nominees to include, if available, video showing them on the job (on or off site). This will not impact the selection chances. Last year we received informal action and on-the-job photos from several New Faces; these snaps were a popular addition to our online feature and we encourage you to include these again, if available. See <http://www.eweek.org/site/Engineers/newfaces2009/index.shtml> for more information. Good Luck!



Don't Miss Your Opportunity

Looking for a new adventure at ASME? Need a volunteer to help your group get on track? If you answered "yes" to either of these questions, the Volunteer Opportunity Bulletin Board (VOBB) could help. The VOBB is the one-stop online resource for those interested in finding open volunteer positions and groups needing enthusiastic volunteers for their ASME local, District and/or international level committees. As a tool designed to help ASME leaders promote and fill volunteer positions throughout the society, the VOBB opens the door to new opportunities.

To learn more about the VOBB, posting an online position or filling a posted position, go to <http://volunteer.asme.org/vobb/> or contact Ty Booker at booket@asme.org.

Global Engineering Management Conference (GEMC) Provides Hands-on Experiential Learning Opportunities for Engineering Managers

The challenges facing mid-career engineers today require a balanced portfolio of technical and soft skills. In response to this need for specialized training, the ASME Management Division has developed the Global Engineering Management Conference (GEMC) in conjunction with an Advisory Board of industry leaders. With a focus on knowledge transfer from best-in-class organizations and an emphasis on hands-on experiential learning, the GEMC will provide unique insights into what engineering managers need to compete in an increasingly demanding global market place. Attendees will benefit from technical panels discussing critical subjects including, but not limited to:

- Global Manufacturing & Management Challenges
- Crisis Management & Business Recovery
- Design & Development of Sustainable Energy
- Managing & Developing Engineers in Large Corporations

The GEMC includes a host of activities, such as an exclusive tour of the Texas Instruments LEED Manufacturing Facility and a behind the scenes engineering tour of the new Dallas Cowboys stadium. Furthermore, attendees will be able to earn continuing education unit (CEU) accreditation through tutorials led by Dr. Jerry Westbrook, past president and executive director of the American Society for Engineering Management (ASEM).

The GEMC will be held on April 11-14, 2010 at the Fairmont in the heart of downtown Dallas, Texas. Visit our website for further information and to check out the new GEMC Interview Series which includes an insightful interview with Dr. Westbrook at <http://www.asmeconferences.org/gemc10/>



2009 Virginia Tech Scholarship Award

The ASME Foundation would like to congratulate Justin Klein, winner of the Virginia Tech Department of Engineering's 2009 VT Scholarship Award for the second year in a row. According to Dr. Richard C. Benson, dean of the College of Engineering, Klein has made excellent progress in his graduate studies, having completed his course work and currently researching and writing his Master's thesis. Klein will graduate in May 2010. His current research involves the durability and lifetime predictions of elastomer seals for hydrogen fuel cells.

The Virginia Tech Memorial Scholarship Fund was created with your generosity to permanently observe the tragic events of April 16, 2007.

The fund is currently endowed to ensure that a VT graduate student in engineering will receive a scholarship award each year.

Once more, we congratulate Justin Klein, (seen above at the Punchbowl Falls near Portland, Ore.) on his continued achievements.

The Virginia Tech Memorial Scholarship Fund was created with your generosity to permanently observe the tragic events of April 16, 2007. The fund is currently endowed to ensure that a VT graduate student in engineering will receive a scholarship award each year.

GD&T SEMINAR IN SALT LAKE CITY

A seminar on the newly revised *ASME Y14.5* standard for geometric dimensioning and tolerancing (GD&T) will take place on Oct. 8, 2009, at the Sheraton Salt Lake City in Salt Lake City, Utah. The seminar aims to provide users of *ASME Y14.5* with an overview of the principles of GD&T, as well as review the changes that ASME has incorporated into the current 2009 version of the popular standard. GD&T is a universal design language that has been rigorously studied and applied by manufacturers around the world. It is widely considered by mechanical engineers to be an essential tool for communicating design intent. By providing uniformity in drawing specifications and interpretation, GD&T reduces guesswork throughout the manufacturing process — improving quality, lowering costs, and shortening deliveries. *ASME Y14.5-2009* has been fine-tuned with ease of use and readability in mind. For registration information and other details on the seminar, visit the website <http://www.asmeconferences.org/y145/>

E-MENTORS PROVIDE CAREER GUIDANCE

If you are interested in finding an E-Mentor, visit ASME's E-Mentoring Program on ASME.ORG — <https://secure.asme.org/signin/ementoring.cfm> — and take a look at the various mentor biographies in the E-Mentor database, or search for an E-Mentor by industry or location. E-Mentors in the program represent a wide range of companies and organizations, including Abbott Labs, Boeing, Caterpillar, Cessna Aircraft, Duke Power, Entergy Nuclear, IBM, Lockheed Martin, UPS, Procter and Gamble, the Smithsonian Institute and more. Candidates need to submit an application form and specifying up to three mentors who best fit their career interests. ASME will confirm your membership status and the matching process will begin. Mentors and mentees will be notified by e-mail when their match has been made. ASME has more than 800 mentors who are waiting to help guide students and early career engineers via the Society's E-Mentoring initiative.

VOTE NOW !!

The Future of ASME is in your hands!!!

Names and Bios of Nominees for Society Office for terms beginning in June 2010 are available online at <http://www.asme.org/Governance/Nominating/>. Ballots are included in the September 2009 issue of Mechanical Engineering magazine and are due on or before Oct.23, 2009

You have the power to shape the future of ASME!!