

ASME PROFESSIONAL DEVELOPMENT SEMINAR

Geometric Dimensioning & Tolerancing: ASME Y14.5-2009: What's New in the Standard?



Register & get your 50+ page GD&T booklet (PDF) FREE! Attend in-person or by Webinar

SPEAKER

Bryan R. Fischer, President
Advanced Dimensional Management, LLC

Saturday, October 24, 2009
9 am – 4 pm PDT

Location: Santa Clara University
Bannan Eng. Lab, BLDG 403

Non-Member: \$125 per person
Member ASME or SVEC: \$75 per person
Student, Unemployed, or Retired: \$45



Advanced Dimensional Management LLC

www.advdm.com

All in-person attendees will receive a catered lunch as part of the seminar experience.

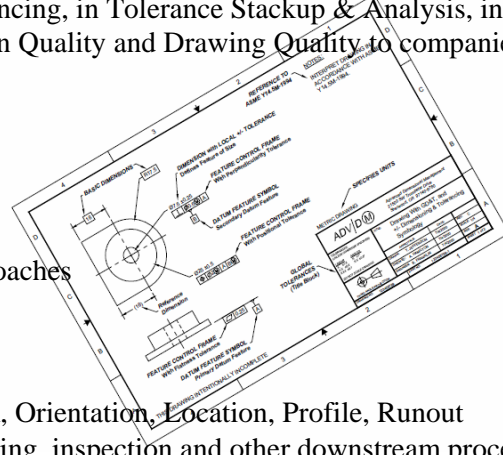
SEMINAR ABSTRACT

Bryan R. Fischer is an **ASME Certified Senior Level GD&T Professional**, a member of several national standards committees involved with GD&T and other engineering standards. Bryan is the author of several books on GD&T, Tolerance Analysis, and Print Reading. He has been actively involved in the shaping of the new GD&T Standard, ASME Y14.5-2009. This seminar is a detailed, technical and in-depth overview of the principal changes and improvements in the ASME Y14.5-2009 standard. Changes in philosophy and the overall intent of the new revision are discussed and have applicability to the migration from 2-D to 3-D. New terms, definitions, symbols, rules, feature types, tools, techniques, approaches, and changes made to each section of the standard are also presented. Implications of the changes to the design, manufacturing, inspection and other downstream processes are discussed.

Bryan is President of Advanced Dimensional Management LLC in Sherwood, Oregon, offering leading-edge training and consulting in Geometric Dimensioning and Tolerancing, in Tolerance Stackup & Analysis, in Dimensional Management, in Variation Management, in Design Quality and Drawing Quality to companies worldwide.

YOU WILL LEARN ...

- Overall intent of the new standard
- Changes in philosophy
- New Terms, Definitions, Symbols, Tools and Rules
- New and expanded Feature types, techniques and approaches
- Examples, applications and alternative methods
- 3-D Model-Based Techniques
- Extensive Discussion of changes:
 - Dimensioning, Tolerancing, Symbology, Form, Orientation, Location, Profile, Runout
- Implications of the new standard to design, manufacturing, inspection and other downstream processes



YOU WILL GET – 50+ page PDF booklet loaded with information about the new standard – a \$30 value

WHO SHOULD ATTEND

GD&T Professionals, Design Engineers, CAD Users, Mechanical Engineers, Manufacturing Engineers, Quality Engineers, Inspection & Assembly Professionals, Machinists, Technical Managers, Project Managers, Technical Professionals, Unemployed Engineers

CONTACT REGISTRAR

- Sunil Belligundu: (408) 768-2391
- Email: sbelligundu@gmail.com

REGISTER AND PAY

- Acteva (Credit card online: subject to fee) <http://www.acteva.com/go/asmescvs>
- Mail in Form must be received on the day before the seminar.

Send payment to: ASME Professional Development Chair, P.O. Box 611865, San Jose, CA 95161-1865
Payment must be received prior to the seminar and will not be accepted at the door.

**Geometric Dimensioning & Tolerancing:
ASME Y14.5-2009: What's New in the Standard**

Name _____ Company _____

Address _____ Title _____

City _____ State _____ ZIP _____ Phone _____

Email _____ Engineering Society _____ Attend in Person Attend online



Distinguished Speaker

Bryan R. Fischer

President – [Advanced Dimensional Management LLC](#)

Mr. Fischer is a leading subject-matter expert in Engineering Drawing and Modeling Standards, GD&T, Tolerance Analysis, Dimensional Management and 3D PMI and Model-Based Product Definition. He is a published author with over 25 years of industrial experience, having held positions as a GD&T Subject-Matter Expert, GD&T Mentor, Tolerance Analyst, Dimensional Management Engineer, Project Engineer, Design Lead, Senior Designer, Senior Checker, Checking Mentor, Design Drafter, CAD Systems Programmer, Trainer and Consultant in the areas of GD&T, Mechanical Design, Drawing Quality, Dimensional Management and Tolerance Analysis. He has experience working, training and consulting in many industries, both commercial and government, with companies ranging from very small to the largest multi-national corporations. He has consulted with inspection and CAD software developers to help them improve their implementations of GD&T, 3D PMI, and model-based product definition practices. He is a member of the American Society of Mechanical Engineers (ASME), the American Society for Quality (ASQ), and SAE International. **He is proud to be an ASME Certified Senior Level GD&T Professional** and an SAE ARI Registered Consultant. He was the founding President of the NW Chapter of the American Design Drafting Association (ADDA) from 1992-1993. Mr. Fischer is an Adjunct Professor at the Oregon Institute of Technology.

Standards Management

Mr. Fischer has been active in the area of corporate, national, and international standards development and standards management throughout his career. He is a member of many standards committees and organizations as follows:

Member: Drafting and CAD Standards Development Activities for Various Employers (1986–2001)

Member: Drawing Practices Group (DRPRG): ADDA Representative in association with the Dept. of Defense to convert MIL-STD-100 to ASME Y14.100 (1993–1996)

Member: ASME Y14.5 Sub-committee Support Group: Dimensioning and Tolerancing (1999–present)

Member: ASME Y14.43 Sub-committee: Dimensioning and Tolerancing of Gages and Fixtures (2006–present)

Member: ASME Y14.45 Sub-committee: Measurement Data Reporting (2008–present)

Member: ASME Y14.100 Sub-committee: Engineering Drawing Practices (1993–present)

Member: AIA-ASD LOTAR International Team: Processes for STEP and 3D Digital Data Product Definition (2009-present)

Contributor: Review and Commentary for ISO Dimensioning and Tolerancing Standards

Publications

Fischer, Bryan R., [Understanding Engineering Drawings](#), Advanced Dimensional Management Press, 2000-2006. Manual and workbook for training industrial staff in reading engineering drawings.

Fischer, Bryan R., [Journeyman's Guide to Geometric Dimensioning and Tolerancing: GD&T for a New Millennium](#), Advanced Dimensional Management Press, 2002-2009. Training and reference manual for GD&T.

Fischer, Bryan R., [Mechanical Tolerance Stackup and Analysis](#), Marcel-Dekker/CRC Press, 2004. Exhaustive technical reference and textbook for teaching Mechanical Tolerancing, Tolerance Stackups and Tolerance Analysis.

Fischer, Bryan R., [Tolerance Stackups, Tolerance Analysis & Tolerancing: Fundamentals, Philosophy, Techniques and Application – Plus and Minus Edition](#), Advanced Dimensional Management Press, 2005. Training and reference manual for Tolerancing, Tolerance Stackups and Tolerance Analysis using Plus and Minus Dimensioning and Tolerancing.

Fischer, Bryan R., [Workbooks for Tolerance Stackup and Tolerance Analysis: GD&T and Plus and Minus Editions](#), Advanced Dimensional Management Press, 2005. Workbooks to accompany Tolerance Analysis reference manuals.

Fischer, Bryan R., [Geometric Dimensioning and Tolerancing Visual Glossaries](#), Advanced Dimensional Management Press, 2006-2009. Visual Training Reference for GD&T. Adjuncts to "Journeyman's Guide to GD&T."

Fischer, Bryan R., [Drawing Requirements Manual: 11th Ed.](#) IHS Global, (1216 pgs: J. Leiblich orig. auth.); Revised 10th Ed. and wrote a new section on 3D PMI, Digital Modeling, Annotation, and Using Digital Data as Design Deliverables, 2008.

Fischer, Bryan R., ["The ASME Y14.5-2009 Standard Update Guide: Changes, Improvements, and Clarifications"](#), Advanced Dimensional Management Press, 2009. Training and reference manual detailing changes in the ASME Y14.5-2009 standard.

Notable Design Accomplishments

Void Fraction Instrument: Westinghouse Hanford Co., 1993–1994. Lead Mechanical Designer for Sampling Arm, remotely deployed to assess mitigation of hazardous gas accumulation. Highlighted in *Mechanical Engineering Magazine*, June, 1995.

Consulting

Mr. Fischer has consulted and led in-house training and public seminars in Drawing Practices, Drawing Standards, Drawing Quality, Geometric Dimensioning and Tolerancing, Tolerance Analysis and 3D Modeling since 1997. Advanced Dimensional Management LLC offers a full range of Engineering Standards and Dimensional Management services, materials, and software.