

Message from your section Chair

Greetings members,

It is an honor to be your ASME Santa Clara Valley Section chair for this year. In the last few months I have been trying to come up to speed with the responsibilities and activities of a dynamic and dedicated section as ours. I would like to summarize what's been happening at ASME, and to reflect on our section accomplishments and future direction and in the process engage your interest. Although this is a long message, I promise there will be fewer and shorter ones in the coming newsletters. I appeal to your patience and attention here.

ASME in the last year has gone through a fundamental change in the way it is structured and it operates. Mainly due to the fact that ASME expenses continue to rise while its revenues remain stagnant. ASME does not want to be just a publishing and public relations organization. The result is that ASME had to cut down on its spending and try to innovate in ways to increase its revenues. The causality was the decision by ASME to cut its subsidies to all of its sections. There was also a reconsolidation of the twelve regions into five larger districts. Our region (IX) has merged with other west coast regions, Oregon, Nevada, Washington, Hawaii and part of British Columbia. We are part of a larger district with a new name "North American Pacific district". Other changes can be seen at the new expanded www.asme.org website.

The primary goal of our section team is to continue the great activities and services that this section has offered to its members in the past. We are committed to interesting technical dinners, exciting industry tours, and solid professional development courses. We also want to be relevant and useful to our local industry and we want to hear from our new comers and our longtime "silent majority" in particular in this section.

I encourage you to remain involved with ASME, and with your Santa Clara section. This is your section and your support is more vital now than ever. The membership cost is really a small investment for the potential of great returns. First, there is the significant intangible one gets from the camaraderie found in an association with people of common professional interest, needs and skills. Benefits such as health and life insurance for the self-employed and unemployed, referrals and knowledge support are just some other tangible examples.

Mr. Russ Yarp (past year's chair) made a very comprehensive and compelling presentation at our recent Industry Relations Dinner (IRD) in October that was held at the University of Santa Clara to some eighty industry executives and representatives

ASME cannot continue to offer these benefits without the collective power of a large membership. Significant loss and apathy of members may cause funds to disappear and sections to close if they are not active. An individual needs a strong association for certain activities despite the inefficiencies one may see or perceives in them. There is always strength in larger groups. ASME districts are run solely by volunteers, and so is our section. We are really a very lean and efficient machine! We manage to put on monthly technical dinners at low or no cost to our members, provide professional development courses at very competitive prices, and still able to support students and other community activities. Our team works hard to put on these events, raise funds, and continue the legacy of past section teams.

In closing, a volunteer organization survives by the willingness and effort of its members. I believe we are in the most technical and dynamic region of the country and even the world. Our members have great energy and talents. I am confident that you will continue to do great things for engineering, your country and humanity. This section would like to support your professional journey and wants you to be a part of our team.

For the New Year I would like you to resolve to remain a loyal ASME member and to get involved when you can, with the Santa Clara section's activities. It has been so far for me a rewarding and enriching experience. If you have any comments, ideas or suggestions please do not hesitate to send them to me at: amerhaj@aol.com, or to any of the officers listed on page 5. I promise that we will promptly and graciously respond to every message or comment we get from you.

My best and warmest regards.

Amer El-Hage

Chair, ASME - SCVSection

INSIDE THIS ISSUE

- 1 **Message from Silicon Valley Section Chair**
- 2 **New Internship Opportunity**
- 2 **Katrina Loans Available for Students**
- 3 **ASME ABET Degree Program Evaluators**
- 4 **One Stop For Member Support**
- 5 **Activities of the Santa Clara Valley Section**
- 6 **Seminar: Nonlinear Finite Element Analysis**

NEW INTERNSHIP OPPORTUNITY FOR EARLY CAREER ASME MEMBERS

ASME's Center for Leadership and Diversity is pleased to announce the creation of a new internship opportunity for early career ASME members. ECLIPSE, Early Career Leadership Intern Program to Serve Engineering, is a program designed to place early career engineers in highly visible and productive roles within the ASME organization. ASME believes that early career engineers can make significant contributions to its various units and is eager to encourage their active participation in all levels of the Society.

ECLIPSE is a competitive internship program. Applications are solicited in the December through February timeframe, with the selection of interns made in March. ECLIPSE participants are matched with a specific ASME unit for a period of one year. The interns work closely with an assigned mentor to complete one or more projects throughout the year. Internships commence at the Summer Annual Meeting (SAM) with an Early Career Leadership session. Interns also attend the IMECE in November, as well as training at the Leadership Development Conference. At the conclusion of the internship period, ECLIPSE participants are assisted in identifying opportunities for continued participation in ASME.

Participation in ECLIPSE is open to any ASME member who has served a minimum of three, but not more than 10, years in the workforce since completion of her/his engineering degree. ASME members who have previously served as Leadership Development Interns (LDIs) or Minority Leadership Program (MLP) interns are not eligible for participation in ECLIPSE, but are encouraged to serve as mentors.

Applicants should assume that they will need to attend several out of town meetings of approximately three days' duration during the internship period. The cost of attending those meeting will be partially covered by ASME in accordance with Society Policy P-4.5: reasonable transportation costs to attend pre-approved meetings are eligible for reimbursement, as are lodging and meal expenses up to a \$100 per day per diem. All expense reimbursements are subject to budget limitations. ASME encourages cost sharing of these expenses with the interns' employers.

Additional information on ECLIPSE, as well as the application form, is available at www.asme.org. Select Communities/Early Careers/Mentoring. For additional information, contact Marian Heller, director of the Center for Leadership and Diversity, at hellerm@asme.org

ASME Connections On ASME.ORG

At ASME Connections, meet the faces behind some of the successes so far, converse with other members at ASME's growing [Communities of Practice](#) web forum, and learn about the new programs that are being developed by the Society at the [New Initiatives](#) link. You may also access a number of news outlets such as [ASME News Online](#), [Inter-Comm](#), the quarterly news publication, and the [ASME Press Room](#).

ASME Connections will be updated regularly. For additional information, contact Mel Torre, director, Communications at torrem@asme.org or 212 591 8157.

New *Community* to Discuss ASME Web Site Available

A new community called [ASME Website](#) has been formed within ASME's Communities of Practice site for comments and feedback regarding the revamped ASME.org.

Access to the Communities of Practice site is open to members and nonmembers. To join this Community to provide your feedback, log on to www.cop.asme.org

Katrina Loans Available for Eligible Students

ASME has established a fast track student loan for mechanical engineering students who have been adversely affected by Hurricanes Katrina & Rita. Applications will be accepted on a continuous basis thru June 30, 2006.

For more information contact Maisha Phillips at (212) 591-7371 or PhillipsM@asme.org. Additional information can also be obtained by visiting the Web site at <http://www.asme.org/education/enged/aid/loan.htm>

ASME Solutions Provides The Tools For Success

Today's new and expanding global market demands more than conventional thinking. Whatever your business, you need to build and maintain your engineering edge, with the insight and training that only comes from a leader. **ASME Solutions** is a powerful, comprehensive, and unique resource that provides industry-specific tools required for success. Through **ASME Solutions**, companies or institutions can partner with ASME to ensure a competitive edge.

Find out how to build a stronger engineering community and a better business environment. Visit <http://www.asmesolutions.org/>

Call For Nominations: ASME ABET Degree Program Evaluators

The Center for Education is accepting nominations for ASME ABET Mechanical Engineering/Mechanical Engineering Technology and related degree program evaluators.

As a Participating Society of ABET Inc. (the Accreditation Board for Engineering and Technology), ASME is responsible for 428 degree programs in the U.S. and for establishing a diverse cadre of highly qualified and highly committed ME/MET Program Evaluators to assume the very sensitive and important role of assessing undergraduate degree programs against established criteria.

All ASME program evaluators must submit a completed nomination, be selected, participate in a training workshop, and serve as an observer on an on-campus evaluation team visit prior to being placed on the roster of "active" evaluators for a period of 5 years. Serving on an assessment team for a degree program is very professionally and personally rewarding and an important means of "giving back" to and supporting the future advancement of the engineering profession.

Qualifications:

- 10+ years professional experience in either industry, government, or academia
- ASME member in good standing
- Graduate degree a plus
- ***Women, minorities, and engineers working in industry or government are especially encouraged to apply***

Additional information including an application form can be found at:

www.asme.org/Education/CertifAccred/Become_Evaluator.cfm

Nominations should be submitted by March 30 and forwarded to: Amy Bentow, Manager, Education, ASME Three Park Avenue, New York, NY 10016. Phone: 1-212-591-7880 Email: bentowa@asme.org

ASME News Is Now Online!

ASME News is now available to membership exclusively online at <http://www.asmenews.org>. When a new issue of ASME News is posted, a special announcement will appear on the ASME homepage and on Mechanical Engineering magazine online's *only on M.E. Magazine box* (located in the table of contents page of the magazine).

Student Activity Calendar

January

Jan 31 Applications Deadline: [Gas Turbine Industrial Fellow](#)

Jan 31 Those who have not [renewed](#) their 2005-06 membership are dropped

February

Feb 1 Deadline: Early Career Leadership Intern Program to Serve Engineers

Feb 1 Nomination deadline: [Student Section Advisor Award](#)

Feb 1 Abstract Deadline: [NDE Student Paper Competition](#)

Feb 15 Manuscript Due: [Arthur L. Williston Award Contest](#) – (Civic Service Paper)

Feb 19-25 [National Engineers Week](#)

March

March 1 [Old Guard Early Career Engineer Essay Competition](#) deadline

March 1 [Old Guard Young Engineers Award](#)

2006 ASME Young Engineers Award Nominations Needed!



The ASME Old Guard Committee is accepting nominations for the 2006 Young Engineer Award. ASME members that have made great strides in the engineering profession, community and the work of the society and have continuous membership since becoming an ASME student member and earned a baccalaureate degree in Mechanical Engineering between the years March 1, 2000 - March 1, 2002 are eligible to apply.

The Grand Prize is \$5000 including a prepaid life ASME membership. To learn more about the selection criteria and how to nominate, visit:

<http://staging.files.asme.org/asmeorg/Communities/EarlyCareer/8026.pdf>

One Stop for ASME Member Support

Now that ASME has moved on from Continuity & Change to the Implementation phase, one of the obvious changes will be in how we support our members. Now that our field offices have been closed, member support has been consolidated in the ASME Information Central. Should you need to contact ASME with questions regarding your membership, you'll only to call one phone number, or send one email.

Phone: 800-843-2763

Phone: 001-800-843-2763 (Mexico)

Phone: 973-882-1170 (Outside North America)

Fax: 973-882-1717

Email: infocentral@asme.org

For a full list of contact information, please visit:
<http://regions.asme.org/closures>

The Old Guard Early Career Engineer Competition

The ASME Old Guard Committee is accepting entries for an Early Career Engineer Essay Competition. All ASME members who have between 4-10 years work experience in professional practice since graduation may apply. An award of \$1,000 plus a lifetime membership (valued at \$2,500) will be given to the author of the winning essay. For more information, visit the [Essay Competition](http://www.asme.org/Communities/EarlyCareer/Early_Career_Engineer_Essay.cfm) webpage:
http://www.asme.org/Communities/EarlyCareer/Early_Career_Engineer_Essay.cfm

Mechanical Advantage is accepting articles for the February 2006 issue. *Mechanical Advantage* is ASME's online student newsletter, which offers engineering students useful articles, program information and upcoming events and deadlines. **Student submissions are highly encouraged!**

For more information visit:

<http://www.asme.org/NewsPublicPolicy/Newsletters/MechanicalAdvantage/> or contact Maisha Phillips, Coordinator, Student Development at phillipsm@asme.org

Call for Nominations: 2006 ASME Johnson & Johnson Medal

The Center for Leadership & Diversity is actively soliciting nominations for the 2006 ASME Johnson & Johnson Consumer Companies, Inc. Medal.

This medal recognizes outstanding contribution by an individual, company, government entity, school, or other organization towards developing and implementing practices, processes and programs that value and strategically manage diversity and inclusiveness. The award includes a medal, certificate and honorarium of \$1,000. In addition, travel expenses of the recipient are reimbursed, in accordance with ASME Policy -4.5, to allow the recipient to attend the meeting at which the presentation of the medal is made.

The first recipient of the Medal, Dr. Joseph Bordogna, was recognized during the Honors Assembly at the 2005 Congress.

Nominations, along with a completed nominations packet, must be received no later than Feb.1, 2006. The ASME JJCCI Medal Nominations Committee will review the nominations, and a recommendation will be made to the Committee on Honors by no later than March 1, 2006.

Award applicants should be able to:

- Demonstrate alignment to the core values of ASME
- Demonstrate the effectiveness of their practices, processes and programs towards increasing the numbers of women and minorities within the multi-disciplines of mechanical engineering
- Demonstrate the impact of programs that are designed to include diverse participants and that create positive work and achievement environments for all participants.

In addition, award applicants:

- Must be a member of ASME or of a recognized engineering society;
- If an institution or organization, must have had an established program for a minimum of two years with more than 25 active participants; and,
- Must not have been involved in litigation related to discrimination or harassment within the past three years.

Additional information, as well as the nomination form itself, may be found at
<http://www.asme.org/honors/ms71/saa/johnson.html>.

Santa Clara Valley Section Events

Silicon Valley to Honor Hall of Fame Inductees at Engineering Week Banquet

The Silicon Valley Engineering Council (SVEC) proudly presents its 2006 Silicon Valley Engineers Week Banquet on February 24, 2006. The SVEC will honor five outstanding individuals for their remarkable contributions by welcoming them into its Hall of Fame. It will also feature a distinguished keynote speaker and award several scholarships for academic excellence.

The five distinguished Hall of Fame inductees will include:

Mr. Jack Baskin, Founder of the School of Engineering at the University of California, Santa Cruz
Dr. Thomas Kailath, Hitachi America Professor of Engineering Emeritus at Stanford University
Mr. Jerry Sanders III, Chairman of the Board Emeritus, Advanced Micro Devices
Dr. Sass Somekh, President of Novellus Systems, Inc.
Dr. Lotfi Zadeh, Professor of Electrical Engineering and Computer Science at the University of California, Berkeley

The featured keynote speaker will be Dr. Sasha Buchman of Stanford University in 1987. He is presently Science Mission Manager for the Gravity Probe-B Relativity Mission. Gravity Probe B is the relativity gyroscope experiment being developed by NASA and Stanford University to test two extraordinary, unverified predictions of Albert Einstein's general theory of relativity.

The SCEC will award several scholarships for academic excellence.

Register online with a credit card at <http://www.123signup.com/calendar?Org=svec>

For further information on this event see <http://www.svec.org/banquet/index.html>

Monthly Meetings

Join us at our regular Membership Monthly Meetings.

When: First Monday of the Month

Location: Engineering Building of Santa Clara University

Contact: Prof. Jorge E. González, jgonzalezcruz@scu.edu

Technical Seminars

Our Santa Clara Valley Section sponsors technical dinners and seminars on a regular basis in areas of interest to our community.

Next Seminar: March 11, 2006, Santa Clara, CA

“ABAQUS: Non-Linear Finite Element Analysis”

Sign up online: <http://www.acteva.com/go/asmescvs>

Or Contact: Scott Burr, burrs@asme.org

Student Regional Conference

Santa Clara University Student Chapter will host the 2006 ASME North American Pacific District D South Student Conference March 31-April 2, 2006. More than 120 Mechanical Engineering Students from more than 20 Universities and Colleges from California, Nevada, and Hawaii will gather for three days to test their design and presentations skills. We are looking for ASME Members to volunteer as Judges for the competition. Please contact Prof. Jorge E. González if you want to volunteer. E-mail: jgonzalezcruz@scu.edu.

Information about the Conference can be found at: <http://districts.asme.org/Spring2006/SantaClara.htm>

Contact your Santa Clara Valley Section

We want to know from you. Please, send an e-mail to any of the Board Members below.

Chair: Amer El Hage
E-mail: amerhaj@aol.com
Tel: (415)314-9267

Vice-Chair: Jorge E. González
E-mail: jgonzalezcruz@scu.edu
Tel: (408)554-4459

Treasurer: Michael Mark
Email: markm@asme.org

Communications: Elise Engelhardt
E-mail: engelhardte@asme.org
Tel: (408)360-0669

Professional Development: Scott Burr.
E-mail: burrs@asme.org
Tel (503)723-7392

Industry Relations: Metin Ozen
E-mail: metin@ozeninc.com



ASME PROFESSIONAL DEVELOPMENT SEMINAR

Sponsored by the ASME Santa Clara Valley Chapter. Presenters are from leading firms in Silicon Valley

"ABAQUS: Non-Linear Finite Element Analysis"

SPEAKER

Mr. Atul Gupta, Abaqus-West, Fremont, CA

Saturday, March 11, 2006

9:00 am – 4:00 pm

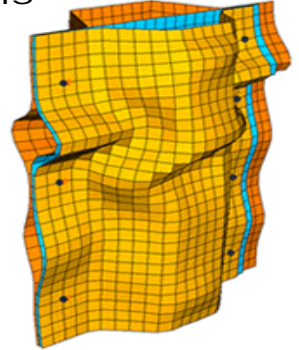
Location: Santa Clara, CA

ASME or SVEC member: \$279 per person

Non-Member: \$349 per person

ASME or SVEC Student or Unemployed Member: \$229

All attendees will receive a catered lunch, and break snacks/drinks will be a part of your seminar experience.



All Participants receive a 451 page PDF, Non-Linear FEM, by Carlos Felippa, PhD and receive links to FREE fully functional FEA software. Register on or before March 3, 2006 & receive FREE BONUS DOWNLOADS for a 55 page PDF, by G.P. Nikishkov, PhD and the PD Chair's list of useful FEA links.

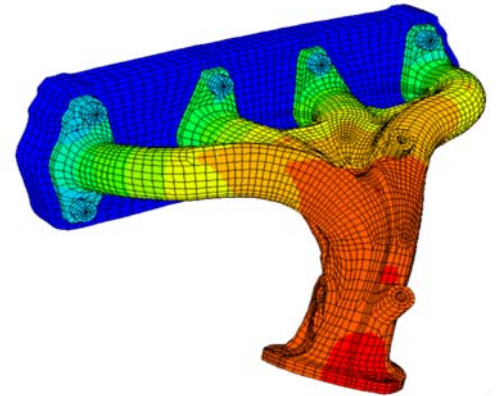
SEMINAR ABSTRACT

The assumption of linearity in design is often incorrect leading to failures or non-performing systems. Non-Linear Finite Element Analysis offers the power to solve complex problems with precise results creating unparalleled understanding of your system. This seminar covers the theory and application of non-linear systems using Abaqus Software. You will hear from Mr. Atul Gupta, a member of the technical staff at ABAQUS West. His primary work includes technical support, consulting, and solving complex problems using nonlinear finite element analysis. Mr. Gupta earned his MS degree in Civil Engineering from the University of California, Berkeley, in 2002, and his BE degree in Civil Engineering from the Center for Environmental Planning and Technology, India, in 2000.

Learn about the advanced application of FEA concepts to non-linear applications!

YOU WILL LEARN...

- Basics of Nonlinear Finite Element Analysis
- What constitutes a nonlinear system
- Basis for nonlinearity in structural mechanics
- Abaqus Software: Development history and capability
- Usage of Abaqus for field problems



ALL PARTICIPANTS WILL RECEIVE

- Course Notes with Example Problems
- FREE downloads for fully functional FEA software for Windows or Linux
- Nonlinear Finite Element Method by Carlos Felippa, Ph.D., 451 pages PDF

REGISTER ON OR BEFORE MARCH 3, 2006 TO RECEIVE BONUS DOWNLOADS

- Professional Development Chair's list of useful FEA links and resources
- Introduction to Finite Element Method (Chapter 7 -Nonlinear Problems) by G.P. Nikishkov, 55 pages PDF

WHO SHOULD ATTEND

Advanced FEA Users, Unemployed Engineers, Users of Finite Element Software, Mechanical Engineers, Consultants, Stress Analysts, Technical Engineering Supervisors, and Technical Engineering Managers.

3 WAYS TO REGISTER

- ☎ Call Registrar: 503-999-5790
- ✉ Email Registrar: burrs@asme.org
- ✉ Mail in Form must be received on the day before the seminar.

Payment methods:

- Check
- Money Order
- [Credit Card \(Acteva\)](#)
- <http://www.acteva.com/go/asmescvs>



Send payment to: ASME Professional Development Chair, P.O. Box 611865, San Jose, CA 95161-1865

Payment must be received prior to the seminar and will not be accepted at the door.

Non-Linear Finite Element Analysis, March 11, 2006

Name _____ Company _____

Address _____ Title _____

City _____ State _____ ZIP _____

Email _____ Phone _____ ASME member # _____